

# VMC 2013

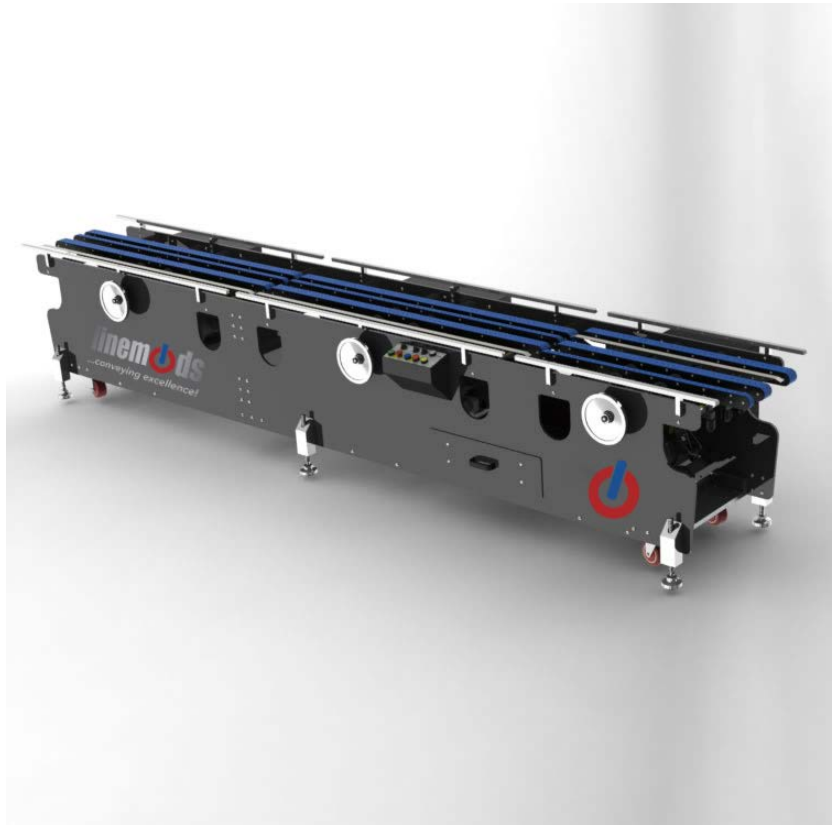
**Product Capacity:**  
Width: 1-20+” / Speed: +450’ minute  
VMC Configuration: (5’ x 5’ x 3’)



Linemods VMC line vacuum transport/finishing conveyors - Quality without compromise, from the innovative vacuum system to the powder coated aluminum frames. Perform quick, easy, tool-less setups with the highest quality deck components available – We have designed this conveyor line from the ground up to cover the most demanding of environments. Plow folding, scanning, ink jetting or placement - Linemods VMC line provides outstanding performance and operator versatility and will prove to be the most user-friendly conveyor available today.

## Attributes:

- Advanced technology vacuum system
- HD DC Drive
- Bi-directional
- 1/2” Powder coated aluminum frames
- Clutched handwheel
- Adjustable height (6”)
- Rubber coated vacuum conveyor belts
- Interchangeable 1” & 2” drives
- Split vacuum chambers
- Tool-less adjustments
- Cantilevered infeed and discharge
- Adjustment scales
- Built in / sealed encoder location
- Easy access vacuum filter
- Storage drawer
- I/O: Start, Stop, Feed and Speed



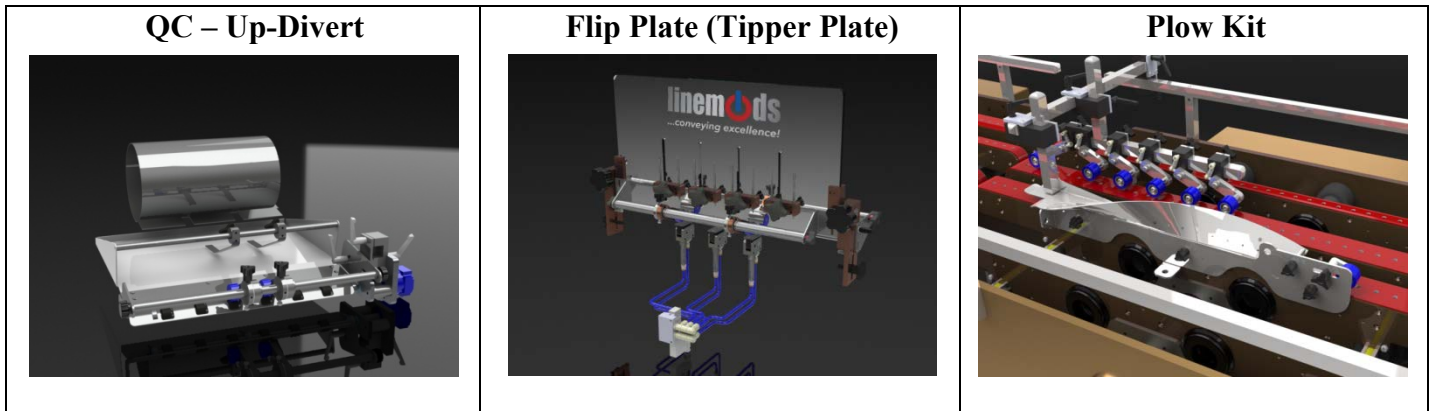
## Vacuum system is engineered for application:

- Self-modulating
- Quiet
- Powerful
- Stall-resistant
- Efficient
- Expandable

**Linemods equipment is designed with a balance of easy operation, longevity, and innovation from over 25 years of experience in the post press/production environment – All equipment equipped with a 2-year built-in warranty.**

**For more information, visit [www.smsdirectinc.com](http://www.smsdirectinc.com) or call 815-524-7700**

Optional Add-On Components:



**Check our website for updates and all available attachments!**

**Design:**

- ✓ Tool-less design – No tools needed to perform most set-ups/changeovers
- ✓ Vacuum belt construction is of a friction resistant backer with a 55D rubber cover, perforated for vacuum integration – The slippery backer provides an extremely low coefficient of friction (belt to fixed surface).
- ✓ Each sector of tube is vacuum regulated (2 sectors per tube). This vacuum system is engineered for consistent; even pull-down - “loaded” or “open deck” – **STALL RESISTANT AND POWERFUL**
- ✓ Component design – All pivot points have bushings - expense not a factor in assembly – all components designed to last.
- ✓ No tab/air blasters - Linemods utilizes air assisted mechanical ramping assemblies that are easy to set-up and use a fraction of the air – Ties into existing glue system controller or Linemods multifunction PLC.
- ✓ 2-year warranty – We are confident with our parts/equipment designs and back new equipment with a 2-yr. warranty.

## System Details:



Large 1-1/2" ID bellows assures uniform vacuum with high flow throughout vacuum tubes - When transports are adjusted side to side, the bellows extends or retracts to fit the exact length – no sagging hoses...

Operator controls are simple to understand and consist of premium quality ABB components. Quality in/performance out. We offer as standard: Start, stop, jog, and feed control. (Feed signal dry contact or 24VDC)

Other I/O options available – Remote start, stop and e-stop.



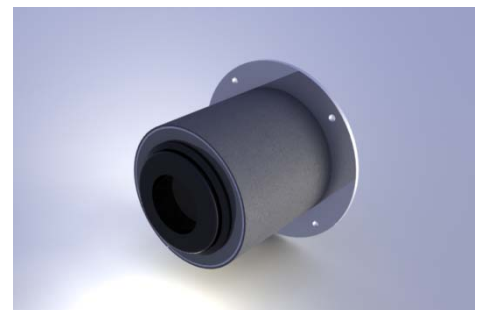
All VMC units are performance engineered to deliver an optimum supply of vacuum without stalling conveyor or stressing pump – We use regenerative vane vacuum system with pressure sensors to precisely control the vacuum pressure – Linemods offers the most innovative, high performance vacuum conveyor system available.

### Feature attributes:

- Solid construction
- Simple electrical/drive components
- Vacuum consistency
- Easy access filter

### VMC Filter Cartridge:

Filter system keeps foreign materials from entering pump and is accessed in seconds – Helps prevent glue from entering pump body



# VMC Vacuum Transport Design:

Two tube widths available to handle most any job (1" and 2") - Design promotes quick removal if desired or easy adjustment – Belts can be changed in minutes. – Vacuum tubes are split into two chambers – this ensures constant vacuum where you need it the most.

- Skewable (stream separation and side register)
- Built in side guides (quick register – full length)
- Adjustable (built in scales to streamline set-ups)
- Removable (without tools in minutes)
- Custom (belts/transports available)
- 3' and 5' lengths (standard builds)



## General Machine Specs:

L: 159"

W: 32"

H: 29-35" (Floor to deck)

Weight: 1450 Lbs.

Power: 230V Single Phase (15 amps)

